

# MDOT Operations Dashboard



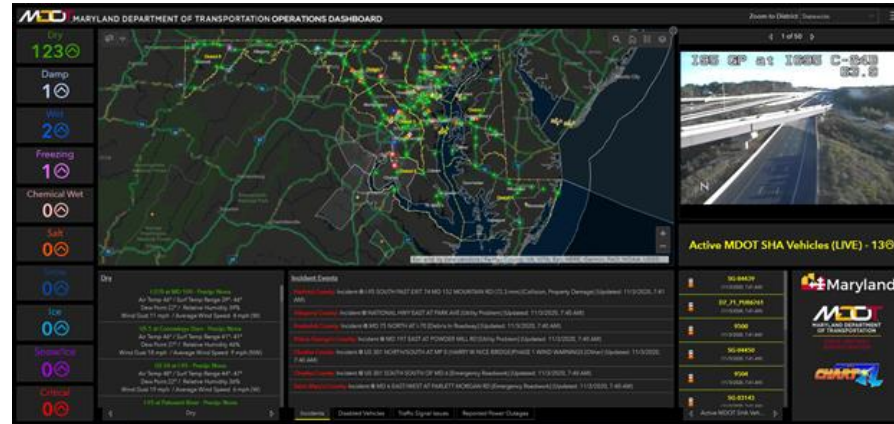
## OVERVIEW OF INNOVATION

**MDOT Operations Dashboard provides an internal common operational picture simplifying work, improving safety and customer experience.**

The dashboard contains an extensive variety of over 60 statewide essential operational data feeds. Live pavement and weather sensor data feeds are displayed to quickly respond to changing roadway conditions. Automated Vehicle Locations (current and 30-min prior) are displayed to show MDOT SHA's fleet of vehicles current and previous locations to potentially address hazardous roadway conditions. Dynamically updated incident events (reported disabled vehicles, traffic signal issues, MEMA power outages) navigate users to the event location, dynamically changing dashboard data elements. Nationwide data feeds (USGS, NOAA) display NWS warnings, wind and stream gauge locations on the map when notable thresholds are reached for forecasted snow and ice accumulations, hurricane tracks, etc.

When an incident occurs, it's displayed in the dashboard as a list. With one click on an incident, the application automatically zooms to the map location with data feeds dynamically adjusting to display pertinent event information along with streaming live video from the nearest roadway video feed(s).

The application, constructed utilizing commercial off the shelf (COTS) technology (Esri), is an internet browser-based application framework built to run on any device, responding to the size/format of the device.



Source: The Maryland Department of Transportation, State Highway Administration (MDOT SHA)

## BENEFITS

The MDOT Operations Dashboard empowers MDOT decision makers with the latest and best available information to quickly and easily make informed data driven operational decisions.

The dashboard enables MDOT decision makers to effectively and efficiently deploy its resources across the State, in response to changing conditions.

## FIND OUT MORE . . .

MDOT SHA Operations Dashboard:  
[http://bit.ly/MDOTSHA\\_OpsDashboard](http://bit.ly/MDOTSHA_OpsDashboard)

### Contact Us:

Craig Mackowiak, IT Assistant Director,  
410-545-5524,  
[cmackowiak@mdot.maryland.gov](mailto:cmackowiak@mdot.maryland.gov)

Operations, Safety, Technology, Weather,  
Traffic Incident Management